

Kelly's



Tree Care

12 OLD KINGSTON RD.
SCARBOROUGH,

ONTARIO
M1E 3J5

PH: (416) 462-0007

FAX: (416) 281-5844

www.kellytree.com

February 21, 2012

Edenshaw Homes Ltd
260 Brunel Road
Mississauga, Ontario. L4Z 1T5

Attention: Kevin Wassermuhl

Re: Arborist Report for 2120 Hurontario Street, Mississauga

Kelly's Tree Care Ltd. was asked to prepare an Arborist Report for the 2120 Hurontario Street development site which includes 2114, 2124 and 2130 Hurontario Street and 2095, 2107, 2113 and 2121 Grange Drive. It is proposed to demolish the existing houses, garages and shed. A building will be constructed which has an underground parking structure which will extend to all property lines. This report provides the information required by the City of Mississauga.

INSPECTION

The trees were inspected on February 14, 2012. All trees of any size on the municipal boulevard and private trees 15 cm or more in diameter (measured at 1.4 metres from grade) on the subject property or within 6 metres of the subject property were examined and inventoried.

For each tree examined, the species was identified, diameter measured, and the health and structural condition determined. Tree inspection was limited to visual on-ground examination without dissection, excavation, probing, or coring. Furthermore, any data and information collected is based on the conditions at the time of inspection. This information is attached as a three page excel spreadsheet titled Tree Inventory.

All trees on site were tagged on the south side of the tree at 1.4 metres from grade with a metal identification number. The tree tags used are numbered from 578 to 584 and 640 to 700. Trees 622 to 639 are located off site and were not tagged, although the trees were given the identifier number. Tree 584 was not tagged, as safety under the tree canopy was a concern. Tree 692B was not tagged as the tree has failed and is lying on the ground. The number given each tree was placed on the site plan by hand, which is attached as Tree Preservation Plan.

DISCUSSION

Eighty-seven (87) were inventoried. Six (6) trees are located on the municipal boulevard. Eighteen (18) trees are located off the subject property. One tree (1) is located on a property line. Sixty-two (62) trees are growing on the subject property.

The excavation for the underground parking structure, which will extend to all property lines, will require the removal of all trees within the subject property. This includes ten (10) trees in poor health and structure.

Excavation and shoring along the property line will require the removal of three privately owned trees which are growing along the property line. Trees 628, a multistem Norway Maple and 630, a 46.5 cm Black Walnut are located on the property of 2114 Hurontario Street. Tree 688, a 42 cm Norway Spruce, is jointly owned with 2129 Grange Drive. Proposed excavation will remove 50% of the root systems and destabilize the trees. The trees must be removed prior to any excavation. Discussions should be held with the owners of the properties to discuss and negotiate removal of these trees.

Trees 636, 637, 638 and 639 are Norway Maples growing along the north property line of 2114 Hurontario Street. The four trees are growing approximately 40 cm from the property line fence. Excavation along the property line will sever some roots from the north side of the root system. These four trees are located in a poor location and all have suffered extensive trunk injury from parking cars. The potential for root damage should be discussed with the property owner; as the trees are all under 15 cm in diameter, permits for "injury" are not required.

Six trees are growing on the municipal boulevard – Trees 640, 662, 686, 687, 695 and 696. It may be possible to preserve Tree 640, although root injury will occur. It is proposed to remove or move the remaining municipal trees. Tree 662 is small enough to move to a different location, to allow full construction access along this side of the development property. Tree 686 is within a proposed walkway. Tree 687 is to be removed for construction access. Tree 695 will need to be removed for grading. Tree 696 is within a service road entrance.

It may be possible to transplant Trees 662, 695 and 696 to a different location with a tree spade. However, prior to this decision being made, the location of underground and aboveground utilities must be determined to ensure that the tree spade can access and move the tree safely.

If Tree 640, the 81.5 cm Black Walnut, is to be preserved, the following steps must be taken:

- a. determine if excavation for underground parking can be moved away from tree to provide more root protection space.
- b. erect a Tree Protection Fence along the edge of pavement to the west to a position 8 metre to the north. The Fence should follow the edge of shoring to the east, expected to occur 2.8 metres away from the tree.
- c. leave asphalt driveway in place until after building construction is complete, to provide additional protection to root system
- d. excavate for parking structure by hand or hydro-vac machinery within the dripline of the tree. Soil excavated will be piled away from the tree and Tree Protection Fence. Roots exposed will be cut sharply at the edge of the excavation.
- e. shoring will be installed immediately and the excavation space between the soil cut and the shoring filled in with soil, to protect roots.

f. after building construction is completed, the asphalt and wood edge within the Tree Protection Fence will be removed by hand. Base material under the asphalt will be raked up by hand. All asphalt and base material will be removed off site immediately. Where a private sidewalk is proposed, the existing base material will be left in place and the sidewalk constructed on top. Any roots exposed within the base material will be left in place. Good quality soil may be added to the exposed surface to bring the grade up to adjacent levels.

G aerate exposed soil prior to addition of soil and provide watering system.

TREE REMOVAL PERMISSION AND REPLANTING REQUIRED

On private property, it is proposed to remove sixty-five trees with diameters of 15 cm or greater. As it is proposed to remove five or more trees with diameter of 15 cm or more within one calendar year, Tree Removal Permission is required. A *Tree Injury or Destruction Questionnaire and Declaration* and an *Application to Permit the Injury or Destruction of Trees on Private Property* are attached and must be filled in by the property owner.

Written permission from the owners of Trees 628 and 630 and the joint owner of Tree 688, agreeing to the tree removal, should be submitted to the City of Mississauga.

Permission from the City of Mississauga will be needed to allow the injury of Tree 640 and the removal or relocation of five additional municipal trees. The City will provide the property owner with any penalties to be levied.

The City of Mississauga should expect one replacement tree to be planted for every healthy or non-hazardous private tree removed. Each replacement tree will have a minimum diameter of 60 mm. If replacement trees cannot be planted, the City will expect a payment in-lieu-of replanting.

TREE PROTECTION SPECIFICATIONS

The following Tree Protection Specifications should be followed to protect the trees from construction injury.

1.0 Adherence to Conditions from Forestry - City of Mississauga

1.1 Compliance with all conditions specified by Forestry - City of Mississauga is required.

2.0 Installation of Tree Protection Fences

2.1 A Tree Protection Fence must be installed prior to the commencement of any construction activities. The Tree Protection Fence shall be erected to protect the trunk and root system of Tree 640 that will remain on the construction site.

2.2 The Tree Protection Fence will be placed as shown on the Tree Preservation Plan.

The following described the placement of the Fences

Tree 640 – along edge of pavement to west, from south property line to a position 8 metres north, from edge of pavement to edge of excavation to the north of the tree, along the edge of excavation to the east of the tree.

2.3 The Fence will be constructed of steel T- Bars (if underground utility locations allow) or L-shaped supports created from 2 by 4 wood placed 4 feet apart covered with orange snow fencing. A 1-inch by 3-inch wood board will be attached to the top and bottom of the snow fencing to provide rigidity to the Fence. The fencing will be securely fastened to the supports. The supports will be anchored in such a way that the Fence cannot be moved but roots are not injured. The bottom of the fence will touch the ground. There will be no gaps in the fence.

2.4 To the tree side of the Tree Protection Fence, the following will be required:

- no alteration or disturbance to existing grade of any kind including adding fill, excavating or scraping.
- no storage of construction materials, equipment, soil, construction waste or debris.
- no disposal of any liquids.
- no movement of vehicles, equipment or pedestrians.
- no location of any utilities such as hydro, gas, phone, cable.
- no temporary attachment or support of signs, lights, cables etc.

2.5 Placement of the following items will be outside of the Tree Protection Fence: parking for construction workers, garbage bins, construction equipment, building supplies, lunch area, washroom facilities. The area inside of the Tree Protection Fence will not be used for any purpose except the protection of trees and their roots.

2.6 Signs shall be attached to the fence denoting the purpose of the fence and indicating the fence cannot be moved or removed without the consent of the City of Mississauga.

The sign will read as follows: **Tree Protection Zone (TPZ)**

No grade change, storage of materials or equipment is permitted within the TPZ. The Tree Protection Fence must not be removed without the written authorization of the City of Mississauga.
For information, call City of Mississauga at 905-615-4100

2.7 Forestry - City of Mississauga will be contacted once the Fence has been erected so the Fence can be inspected.

2.8 The Fences are to be inspected daily, first thing in the morning, by the Site Supervisor. Any failure or breach of the Tree Protection Fence will be fixed immediately upon discovery.

3.0 Excavation for Parking Structure

3.1 The excavation edge to the east of Tree 640 will be dug by hand or hydro-vac machinery for the first one metre of depth, within 8 metres of the tree. This location is shown on Tree Preservation Plan.

3.2 All excavated soil will be piled away from the tree, outside of the Tree Protection Fence or removed off site immediately. The soil will not be spread out over the root system of the tree.

3.3 Any tree roots excavated and exposed during the foundation excavation will be cut sharply using a handsaw or chainsaw.

3.4 The exposed roots will be shored immediately or covered with soil to avoid desiccation.

4.0 Construction Phase Tree Protection

4.1 No pruning of the crowns of Tree 640 is permitted by construction staff. If branches are found to be in the way of construction activities or traffic, pruning of trees should be arranged by the Site Supervisor with competent Arborists.

4.2 New underground utilities will be placed a minimum 8 metres away from Tree 640, to avoid root injury to the tree.

4.3 The finished grade at the base of the building will be such that increasing the grade adjacent to the building and Tree 460 will be kept at a minimum.

5.0 Post Construction Tree Maintenance

5.1 When all construction has ceased and grading outside the Tree Protection Fences is complete, Forestry – City of Mississauga will be contacted to arrange a site visit. Completeness of the project will be determined.

5.2 Once permission from Forestry – City of Mississauga is granted, the Tree Protection Fences may be removed. Removal of the asphalt driveway can be commenced.

6.0 Driveway Removal Tree Protection

6.1 The asphalt driveway to the north of Tree 640 will be left in place until all building construction is completed.

6.2 The existing driveway surface will be removed by hand and all asphalt removed from site. No machinery will be allowed within the area protected by the Tree Protection Fence to remove asphalt.

6.3 The wood along the south side of the asphalt driveway will be removed by hand.

6.4 The base material under the asphalt will be raked up by hand and removed off site immediately. The base material under the proposed sidewalk will be left in place to be reused.

6.5 The grade under the existing asphalt and base material will not be lowered. All roots exposed during base material removal will be left in place and will not be damaged.

6.6 The exposed soil surface will be aerated with either lawn aeration equipment or by drilling 30 cm deep holes, every 30 cm in a grid pattern, to break up surface compaction.

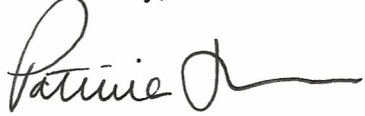
6.7 Good quality soil with a high percentage of sand will be placed within the area of the old driveway to bring up the soil level equal to the adjacent grade. Machinery will not be allowed on the exposed soil surface to spread the soil.

6.8 A watering system should be set up to provide a once weekly watering to Tree 640 in the absence of natural rainfall during the growing season after construction is completed.

One inch of water should be provided per watering. Soaker hoses laid along the soil surface would be the preferred watering system. If underground irrigation is installed, no underground hoses will be installed within 8 metres of the tree.

I trust that this report provides the information you require. If you have any questions or concerns, please contact me.

Yours truly,

A handwritten signature in black ink, appearing to read 'Patricia Thomson', with a long horizontal flourish extending to the right.

Patricia Thomson, B.Sc.F.
I.S.A. Certified Arborist ON-0132A

Attachments: Tree Inventory (3 pages)

Tree Injury or Destruction Questionnaire and Declaration

Application to Permit the Injury or Destruction of Trees on Private Property

Trees to be Injured or Removed

Tree Preservation Plan

Inventory Date
February 14, 2012

TREE INVENTORY

2120 Hurontario Street, Mississauga

Arborist : Patricia Thomson
Kelly's Tree Care Ltd

Tree No.	Tree Species	Latin Binomial	Diameter (cm)	Condition	Comments	Future on site
578	White Mulberry	<i>Morus alba</i>	16 max	poor-fair	3 main stems growing up back of building	remove
579	White Mulberry	<i>Morus alba</i>	15.5	fair		remove
580	White Mulberry	<i>Morus alba</i>	21.5	fair		remove
581	White Mulberry	<i>Morus alba</i>	15.5	poor-fair		remove
582	White Mulberry	<i>Morus alba</i>	20	fair		remove
583	Manitoba Maple	<i>Acer negundo</i>	71	poor-fair	4 stems - 2 failed and 1 cracked by failed Black Walnut 684	remove
584	Manitoba Maple	<i>Acer negundo</i>	approx. 40	fair	not tagged, extensive vines in canopy, Tree 583 hung up in canopy	remove
585 to 621	numbers not used					
622	Norway Maple	<i>Acer platanoides</i>	15.5	fair	not tagged, growing 2 metres from property line	preserve
623	Norway Maple	<i>Acer platanoides</i>	15	fair	not tagged, growing 2 metres from property line	preserve
624	Norway Maple	<i>Acer platanoides</i>	16.5	fair	not tagged, growing 2 metres from property line	preserve
625	Norway Maple	<i>Acer platanoides</i>	15	fair	not tagged, growing 2 metres from property line	preserve
626	Norway Maple	<i>Acer platanoides</i>	11	fair	not tagged, growing 2 metres from property line	preserve
627	Norway Maple	<i>Acer platanoides</i>	8	fair	not tagged, growing 2 metres from property line	preserve
628	Norway Maple	<i>Acer platanoides</i>	32, 25, 24	poor-fair	not tagged, 7 stems originating 20 to 50 cm from grade, included bark in unions, slow growth, 25 cm from fence	remove with owners permission
629	Norway Maple	<i>Acer platanoides</i>	10	fair-good	not tagged, growing 1.7 metres from fence	preserve
630	Black Walnut	<i>Juglans nigra</i>	46.5	fair-good	not tagged, base at property line fence, slowed growth	remove with owners permission
631	Norway Maple	<i>Acer platanoides</i>	10	fair	not tagged, growing 1.7 metres from fence	preserve
632	Norway Maple	<i>Acer platanoides</i>	10	fair	not tagged, growing 1.7 metres from fence	preserve
633	Norway Maple	<i>Acer platanoides</i>	10.5	fair	not tagged, growing 1.7 metres from fence	preserve
634	Norway Maple	<i>Acer platanoides</i>	11	fair	not tagged, growing 1.7 metres from fence	preserve
635	Norway Maple	<i>Acer platanoides</i>	7.5	fair	not tagged, growing 1.7 metres from fence	preserve
636	Norway Maple	<i>Acer platanoides</i>	8	poor-fair	not tagged, vines in canopy, wounds on south side of trunk, 40 cm from fence	preserve
637	Norway Maple	<i>Acer platanoides</i>	11.5	poor-fair	not tagged, top dead, dieback in some branches, wounded on south side of trunk, 40 cm from fence	preserve
638	Norway Maple	<i>Acer platanoides</i>	13.5	fair	not tagged, wounded south side trunk, 40 cm from fence	preserve
639	Norway Maple	<i>Acer platanoides</i>	11.5	poor-fair	not tagged, large wound on south side of trunk, growth adequate	preserve
640	Silver Maple	<i>Acer saccharinum</i>	81.5	fair-good	north base at 4 inch wood edge of asphalt driveway, moderate flower buds, limited branching to north	preserve with significant root injury
641	Silver Maple	<i>Acer saccharinum</i>	59	poor	extensive large deadwood, limited flower buds, poor growth rate	remove
642	Norway Spruce	<i>Picea abies</i>	52.5	fair	slowed growth	remove
643	Austrian Pine	<i>Pinus nigra</i>	53	fair		remove
644	White Cedar	<i>Thuja occidentalis</i>	approx. 20	fair	growing through wooden fence	remove
645	White Cedar	<i>Thuja occidentalis</i>	18	fair		remove
646	White Cedar	<i>Thuja occidentalis</i>	21	fair	growing tight against fence	remove
647	White Cedar	<i>Thuja occidentalis</i>	approx. 18	fair	growing through wooden fence	remove
648	White Cedar	<i>Thuja occidentalis</i>	20.5	fair		remove

Inventory Date
February 14, 2012

TREE INVENTORY

2120 Hurontario Street, Mississauga

Arborist : Patricia Thomson
Kelly's Tree Care Ltd

Tree No.	Tree Species	Lation Binomial	Diameter (cm)	Condition	Comments	Future on site
649	White Cedar	<i>Thuja occidentalis</i>	16, approx. 16	fair	2 stems at 50 cm from grade with included bark in union	remove
650	White Cedar	<i>Thuja occidentalis</i>	22	poor-fair		remove
651	White Cedar	<i>Thuja occidentalis</i>	34.5	fair		remove
652	White Cedar	<i>Thuja occidentalis</i>	15.5	poor	very little growth	remove
653	White Cedar	<i>Thuja occidentalis</i>	21	fair		remove
654	White Cedar	<i>Thuja occidentalis</i>	approx. 25, 17, 16	poor-fair	25 cm stem growing into fence	remove
655	White Cedar	<i>Thuja occidentalis</i>	20.5	poor-fair	leaning on fence	remove
656	White Cedar	<i>Thuja occidentalis</i>	23.5	poor-fair	2 stems at 2 metres with included bark in union	remove
657	White Cedar	<i>Thuja occidentalis</i>	17	poor-fair	wound on west side trunk from 0 to 2 m	remove
658	White Cedar	<i>Thuja occidentalis</i>	19.5, 14	poor-fair		remove
659	White Cedar	<i>Thuja occidentalis</i>	18	poor	1 dead stem	remove
660	White Cedar	<i>Thuja occidentalis</i>	17.5	poor-fair		remove
661	White Cedar	<i>Thuja occidentalis</i>	30, 19	poor-fair	2 stems at 60 cm with included bark in top of union	remove
662	Serbian Spruce	<i>Picea omorika</i>	8.5	fair-good	municipal tree	remove or move to different location
663	White Mulberry	<i>Morus alba</i>	38 max	poor-fair	multiple stems at 10 cm within included bark in unions and partially failed unions, 4 live stems, spreading crown	remove
664	White Mulberry	<i>Morus alba</i>	32.5, 23.5	fair	2 stems at 80 cm with included bark and deadwood	remove
665	Green Ash	<i>Fraxinus pennsylvanica</i>	23, 17	fair	2 stems at 30 cm with included bark in union	remove
666	White Birch	<i>Betula papyrifera</i>	19, 16.5	fair	one stem removed, 16.5 cm stem grafted to ash	remove
667	Green Ash	<i>Fraxinus pennsylvanica</i>	31	fair	top appears alive	remove
668	White Cedar	<i>Thuja occidentalis</i>	approx. 21	poor	4 stems - 3 are dead/have no bark	remove
669	Prunus?	<i>Prunus sp.</i>	42 at 90 cm	poor	appears to be a grafted cherry, extensive deadwood	remove
670	Norway Maple	<i>Acer platanoides</i>	45.5	fair		remove
671	American Elm	<i>Ulmus americana</i>	26	fair	lower deadwood, flower buds seen	remove
672	Norway Maple	<i>Acer platanoides</i>	42	fair	slow growth	remove
673	Norway Maple	<i>Acer platanoides</i>	51	fair	slow growth, small deadwood	remove
674	Black Walnut	<i>Juglans nigra</i>	24	fair-good		remove
675	White Cedar	<i>Thuja occidentalis</i>	15.5 max	poor	dead top, dead stems	remove
676	Siberian Elm	<i>Ulmus pumila</i>	37, 27	fair	2 stems at 40 cm with included bark in union, topped at 4 metres with upright large sprouts, deadwood	remove
677	Black Walnut	<i>Juglans nigra</i>	18.5	fair-good		remove
678	Siberian Elm	<i>Ulmus pumila</i>	33	poor	wound at north base covering 50% circumference	remove
679	Siberian Elm	<i>Ulmus pumila</i>	25	poor-fair	understory tree, deadwood	remove
680	Siberian Elm	<i>Ulmus pumila</i>	30	fair	deadwood	remove
681	Siberian Elm	<i>Ulmus pumila</i>	38, 34	fair	union at 70 cm with included bark	remove

Inventory Date
February 14, 2012

TREE INVENTORY

2120 Hurontario Street, Mississauga

Arborist : Patricia Thomson
Kelly's Tree Care Ltd

Tree No.	Tree Species	Lation Binomial	Diameter (cm)	Condition	Comments	Future on site
682	Siberian Elm	<i>Ulmus pumila</i>	29	fair	deadwood	remove
683	Siberian Elm	<i>Ulmus pumila</i>	31	fair	deadwood, burls on lower trunk	remove
684	Black Walnut	<i>Juglans nigra</i>	39	poor	failed at base, hung up in adjacent trees	remove
685	White Mulberry	<i>Morus alba</i>	approx. 35	poor	grown against chain link fence, top dead at 1.5 metres with resultant sprouts creating canopy	remove
686	Colorado Spruce	<i>Picea pungens</i>	24	fair-good	municipal tree, thin in lower canopy	remove - too large to move
687	Colorado Spruce	<i>Picea pungens</i>	30	fair-good	municipal tree, needle miner infestation, thin lower canopy to east	remove - too large to move
688	Norway Spruce	<i>Picea abies</i>	42	fair	Pitch Mass Borer on trunk	remove with joint owners permission
689	White Cedar	<i>Thuja occidentalis</i>	20 at 1 m	fair		remove
690	White Cedar	<i>Thuja occidentalis</i>	21, 16.5	fair		remove
691	White Cedar	<i>Thuja occidentalis</i>	19, 15.5, 15	fair	3 separate stems	remove
692	White Cedar	<i>Thuja occidentalis</i>	18 max	fair		remove
692 B	Willow	<i>Salix sp.</i>	approx. 120	poor	not tagged, tree failed at base and trunk lying on ground, trunk has resprouted with stems up to 15 cm in diameter	remove
693	Scots Pine	<i>Pinus sylvestris</i>	42.5	poor-fair	thin canopy	remove
694	Cherry	<i>Prunus sp.</i>	15.5	fair		remove
695	Norway Maple	<i>Acer platanoides</i>	16	fair	municipal tree, globe canopy, thick canopy, small deadwood, 2 stubs	remove or move to different location
696	Norway Maple	<i>Acer platanoides</i>	14	good	municipal tree, globe canopy	remove or move to different location
697	White Cedar	<i>Thuja occidentalis</i>	21 max	fair	5 stems in clump	remove
698	Red Maple	<i>Acer rubrum</i>	29	good	2 stems at 4 metres with included bark	remove
699	White Mulberry	<i>Morus alba</i>	15.5 max	fair	growing up side of building	remove
700	Manitoba Maple	<i>Acer negundo</i>	15.5 max	fair	multiple stems	remove

2120 Hurontario Street, Mississauga
TREES TO BE INJURED OR REMOVED

Tree No.	Tree Species	Diameter (cm)	Condition	Future on site
MUNICIPAL TREE TO BE INJURED				
640	Silver Maple	81.5	fair-good	preserve with significant root injury
				1 tree
MUNICIPAL TREES TO BE REMOVE OR MOVED				
662	Serbian Spruce	8.5	fair-good	remove or move to different location
686	Colorado Spruce	24	fair-good	remove - too large to move
687	Colorado Spruce	30	fair-good	remove - too large to move
695	Norway Maple	16	fair	remove or move to different location
696	Norway Maple	14	good	remove or move to different location
				5 trees
PRIVATE TREES OFF SITE OR JOINTLY OWNED TO BE REMOVED				
628	Norway Maple	32, 25, 24	poor-fair	remove with owners permission
630	Black Walnut	46.5	fair-good	remove w. h owners permission
688	Norway Spruce	42	fair	remove with joint owners permission
				3 trees
PRIVATE TREES ON SITE TO BE REMOVED				
578	White Mulberry	16 max	poor-fair	remove
579	White Mulberry	15.5	fair	remove
580	White Mulberry	21.5	fair	remove
581	White Mulberry	15.5	poor-fair	remove
582	White Mulberry	20	fair	remove
583	Manitoba Maple	71	poor-fair	remove
584	Manitoba Maple	approx. 40	fair	remove
641	Silver Maple	59	poor	remove
642	Norway Spruce	52.5	fair	remove
643	Austrian Pine	53	fair	remove
644	White Cedar	approx. 20	fair	remove
645	White Cedar	18	fair	remove
646	White Cedar	21	fair	remove
647	White Cedar	approx. 18	fair	remove
648	White Cedar	20.5	fair	remove
649	White Cedar	16, approx. 16	fair	remove
650	White Cedar	22	poor-fair	remove
651	White Cedar	34.5	fair	remove
652	White Cedar	15.5	poor	remove
653	White Cedar	21	fair	remove
654	White Cedar	approx. 25, 17, 16	poor-fair	remove
655	White Cedar	20.5	poor-fair	remove
656	White Cedar	23.5	poor-fair	remove
657	White Cedar	17	poor-fair	remove
658	White Cedar	19.5, 14	poor-fair	remove
659	White Cedar	18	poor	remove
660	White Cedar	17.5	poor-fair	remove
661	White Cedar	30, 19	poor-fair	remove
663	White Mulberry	38 max	poor-fair	remove
664	White Mulberry	32.5, 23.5	fair	remove
665	Green Ash	23, 17	fair	remove
666	White Birch	19, 16.5	fair	remove
667	Green Ash	31	fair	remove
668	White Cedar	approx. 21	poor	remove
669	Prunus?	42 at 90 cm	poor	remove
670	Norway Maple	45.5	fair	remove
671	American Elm	26	fair	remove
672	Norway Maple	42	fair	remove
673	Norway Maple	51	fair	remove
674	Black Walnut	24	fair-good	remove
675	White Cedar	15.5 max	poor	remove
676	Siberian Elm	37, 27	fair	remove

2120 Hurontario Street, Mississauga
TREES TO BE INJURED OR REMOVED

Tree No.	Tree Species	Diameter (cm)	Condition	Future on site
677	Black Walnut	18.5	fair-good	remove
678	Siberian Elm	33	poor	remove
679	Siberian Elm	25	poor-fair	remove
680	Siberian Elm	30	fair	remove
681	Siberian Elm	38, 34	fair	remove
682	Siberian Elm	29	fair	remove
683	Siberian Elm	31	fair	remove
684	Black Walnut	39	poor	remove
685	White Mulberry	approx. 35	poor	remove
689	White Cedar	20 at 1 m	fair	remove
690	White Cedar	21, 16.5	fair	remove
691	White Cedar	19, 15.5, 15	fair	remove
692	White Cedar	18 max	fair	remove
692 B	Willow	approx. 120	poor	remove
693	Scots Pine	42.5	poor-fair	remove
694	Cherry	15.5	fair	remove
697	White Cedar	21 max	fair	remove
698	Red Maple	29	good	remove
699	White Mulberry	15.5 max	fair	remove
700	Manitoba Maple	15.5 max	fair	remove
				62 trees

Tree Injury or Destruction (Revised) Questionnaire and Declaration

(For a Tree Permit or Tree Removal Permission)



City of Mississauga
Community Services Department
Forestry Division
950 Burnhamthorpe Road West
MISSISSAUGA ON L5C 1T7
Tel: 3-1-1 (905-615-4311 outside City limits)
Fax: (905) 615-3098
www.mississauga.ca

Personal information on this form is collected under the authority of Section 135 of the Municipal Act, 2001, SO 2001 c25, and City of Mississauga By-law 0474-2005 and will be used for processing tree permit applications. Questions about the collection of personal information should be directed to the Manager, Development Services, Planning and Building Department, 300 City Centre Drive, Mississauga, Ontario, L5B 3C1, Telephone (905) 615-3200 ext. 5517.

The City of Mississauga has enacted By-law 0474-2005 that requires a Permit to injure or destroy trees on private property within the City. Furthermore a Tree Removal Permission process has also been established in certain circumstances. A Tree Permit is required when five (5) or more trees with a diameter greater than 15 cm (6 in) are proposed to be injured or removed due to owner's desire or in conjunction with a Building Permit, Pool Enclosure Permit, Erosion or Sediment Control Permit or a Rezoning/Official Plan Amendment. A Tree Removal Permission is required when five (5) or more trees with a diameter greater than 15 cm (6 in) are proposed to be injured or removed in conjunction with a Site Plan, Consent or Subdivision Applications. The following questionnaire is to be completed and submitted in conjunction with the various applications outlined in Item 7.

1. Municipal Address of site: 2120 HURONTARIO STREET Ward No: _____

2. Name of Registered Owner: _____

3. Are there existing trees on the property with a diameter greater than 15 cm (6 in.)? ☒ YES ☐ NO

4. Check all applicable statements.

You intend on injuring or destroying:

- ☐ No treesNo permit or permission
☐ All trees have a diameter of 15 cm (6 in.) or less.....No permit or permission
☐ Up to FOUR trees, with diameters greater than 15 cm (6 in.) within one calendar year.....No permit or permission
☒ Five or MORE trees with diameters greater than 15 cm (6 in.) within one calendar year.....Permit or permission required

Indicate how many trees are subject to injury or destruction: 65

5. If a Permit/Permission is required, have you applied for a permit to injure or destroy the trees ☐ YES ☒ NO

(a) if YES, what is the state of the application? ☐ IN PROCESS ☐ APPROVED ☐ REFUSED

(b) What is the Permit/Permission number: # _____

6. Are there public trees adjacent to the subject property that may be impacted by the proposed construction or development?

☒ YES ☐ NO

Provide the file number for any development applications currently under review for subject property:

☐ Not applicable

Official Plan/Rezoning: _____ Subdivision: _____

Building Permit: _____ Site Plan: _____

Pool Enclosure Permit: _____ Committee of Adjustment: _____

Land Division: _____ Erosion & Sediment Control Permit: _____

Declaration

I hereby declare that the statements made upon this questionnaire and declaration are, to the best of my belief and knowledge, a true and complete representation of my intentions.

Signed at the City of Mississauga this _____ day of _____ 20____

Signature of Owner or authorized Agent _____

Please Print _____

Summary – Office Use Only (based on information provided above)

Date:	Year	Month	Day
Is a Permit/Permission required? <input type="radio"/> YES <input type="radio"/> NO			
If yes, has an application for a Tree Permit/Permission been submitted? <input type="radio"/> YES <input type="radio"/> NO			
Copy: Private Tree By-law inspector, Forestry, 950 Burnhamthorpe Road West. Manager, Development Construction, T&W, 3185 Mavis Road. If building permit is required, and the site is an unregistered plan and site plan, approval is not required.			

Application to Permit the Injury or Destruction of Trees on Private Property

(For a Tree Permit or Tree Removal Permission)



City of Mississauga
Community Services Department
Forestry Division
950 Burnhamthorpe Road
MISSISSAUGA L5C 3B4
Tel.: 905-615-4100 FAX: 905-615-3098
www.mississauga.ca

Personal information on this form is collected under the authority of Section 135 of the Municipal Act, 2001, SO 2001, c25 and City of Mississauga By-law 0474-2005 and will be used for processing tree permit applications. For the purpose of public access to information, a limited amount of information will be displayed on the City's website. Questions about the collection of personal information should be directed to the Private Tree By-Law Inspector, Telephone 905-615-3200 ext.5870.

- Application form to be completed by applicant. Please type or print CLEARLY. Incomplete applications will delay approval.
- Municipal address: Street name and number must be included for applications to be considered complete.
- Provide 4 copies of plans or drawings of the property showing the location of trees to be removed and those being preserved.
- Provide an Arborist report completed by an Arborist as defined, at the direction of the Private Tree By-law Inspector.
- If replanting, provide 4 copies of the replanting plan or landscape plan.
- Payment of the required fees: Please make cheque payable to: City of Mississauga (This is non-refundable)
- Written consent is necessary from an adjacent property owner where the base of a tree straddles a property line.
- If this application is signed by an applicant other than the owner, or by an agent, the written authorization of the owner is required.
- File this application and other supporting documentation to the Forestry Section at 950 Burnhamthorpe Road.
- Applications submitted after 3:30 p.m. local time will not be processed until the next business day.

This is not the permit, but only your application. Removal of trees before receiving approval will put you in contravention of By-law 0474-2005

OFFICE USE ONLY

Permit or Permission No. _____ Official receipt No. _____ Receipt No. _____
Fee \$ _____ Received by: _____ Date _____

REQUIREMENTS FOR APPROVAL

☐ Arborist report required ☐ Site Plan/Drawing ☐ Written consent ☐ Securities ☐ Replacement proposed

1. Municipal address of site : 2120 HURONTARIO STREET 2. Ward # : _____

3. Name of Applicant / Agent: _____

4. Telephone: _____ Work No. _____ Fax No. _____

5. Name of Registered Owner (if different from above): _____

6. Mailing Address of Owner (if different from above): _____

7. Existing land use: _____

8. If applicable, please provide the file number for any current development applications that have been submitted: _____

☐ Official Plan/Rezoning ☐ Subdivision ☐ Building Permit ☐ Pool Permit
☐ Erosion & Sediment Control Permit ☐ Site Plan ☐ Committee of Adjustment ☐ Land Division

9. Have you removed any trees within the last calendar year? ☒ Yes ☐ No

If yes, how many trees were removed? up to 4 per address

How many of these trees were larger than 15 cm? all

10. Number of trees being injured or removed: 65 Please provide area in hectares if removing a woodlot: _____

11. Reason why trees are being injured or removed: **Please circle letter.**

- ☒ A. Trees interfere with proposed development ☐ B. Trees are blocking sunlight
☐ C. All trees are dead, dying or hazardous ☐ D. Trees are interfering with utilities, dwelling foundation or utilities
☐ E. Installing pool ☐ F. Other (please specify): _____

12. Please specify species and diameter of trees subject to injury or removal below.

If more than five trees, specify the five largest trees and reference the remainder in the Arborist report.

6928- Willow 120cm, 583 Manitoba Maple 71cm, 643-Austrian Pine 53 641 Silver Maple 59cm
642 Norway Spruce 52.5cm

13. Are you planning on planting replacement trees? ☐ YES ☐ NO
If yes, is copy of replanting plan attached? ☐ YES ☐ NO

14. A site plan or drawing of the subject property is required and must include the following:

- ☐ The location of any buildings on the property. ☐ The dimensions of the property and location of the streets.
☐ The location and size of trees being protected. ☐ The proposed location for replacement tree(s).
☐ Other natural features on the property such as slopes and creeks.

15. Fee Requirements: **Payment of required fees to be determined at time of submission of application.**

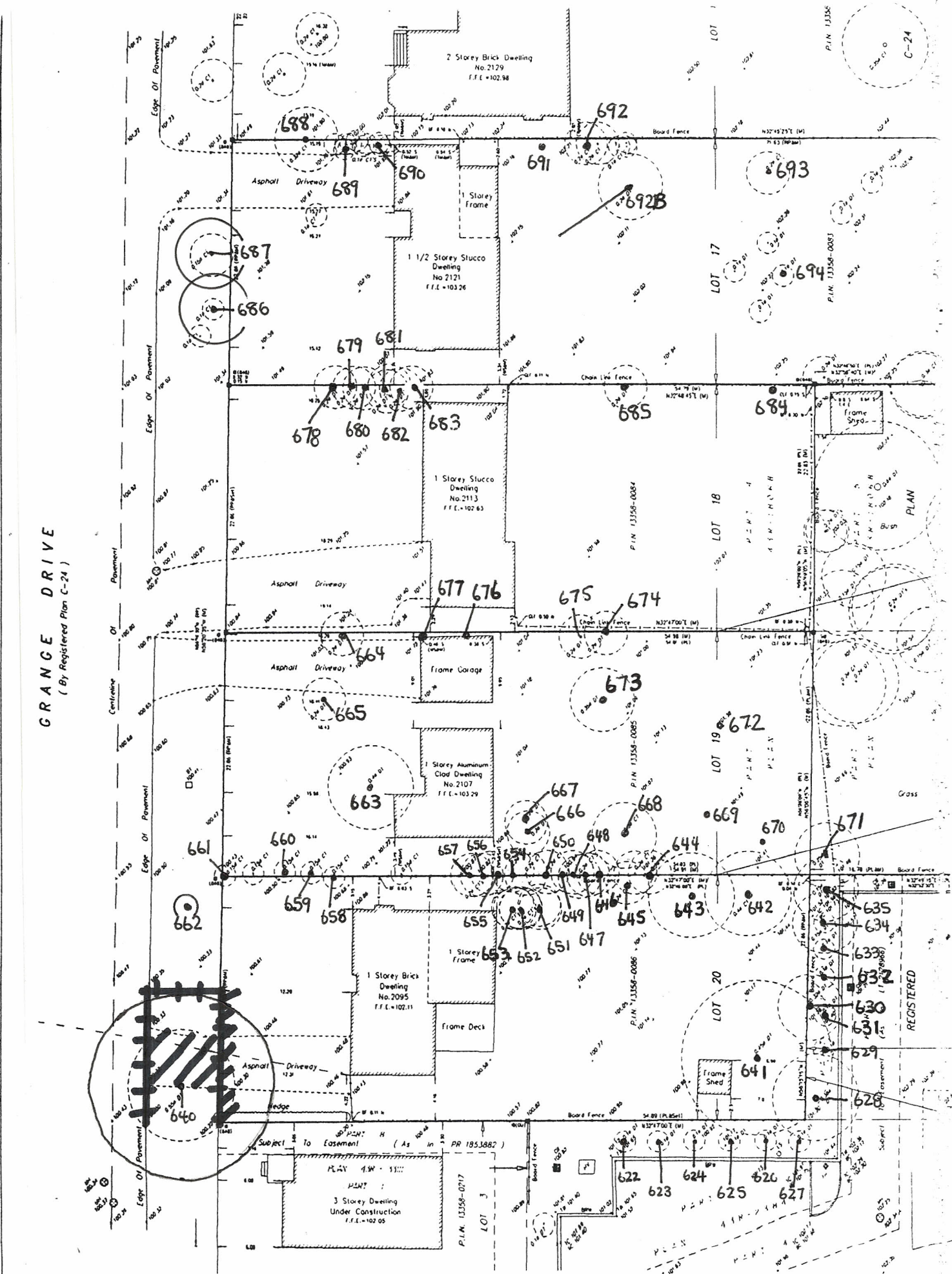
For more information check the Urban Forestry website. www.mississauga.ca/forestry

16. Declaration: *I hereby declare that the statements made by me upon this application are, to the best of my belief and knowledge, a true and complete representation of the purpose and intent of this application.*

Signed at the City of Mississauga this _____ day of _____, 20 _____

Signature of applicant _____

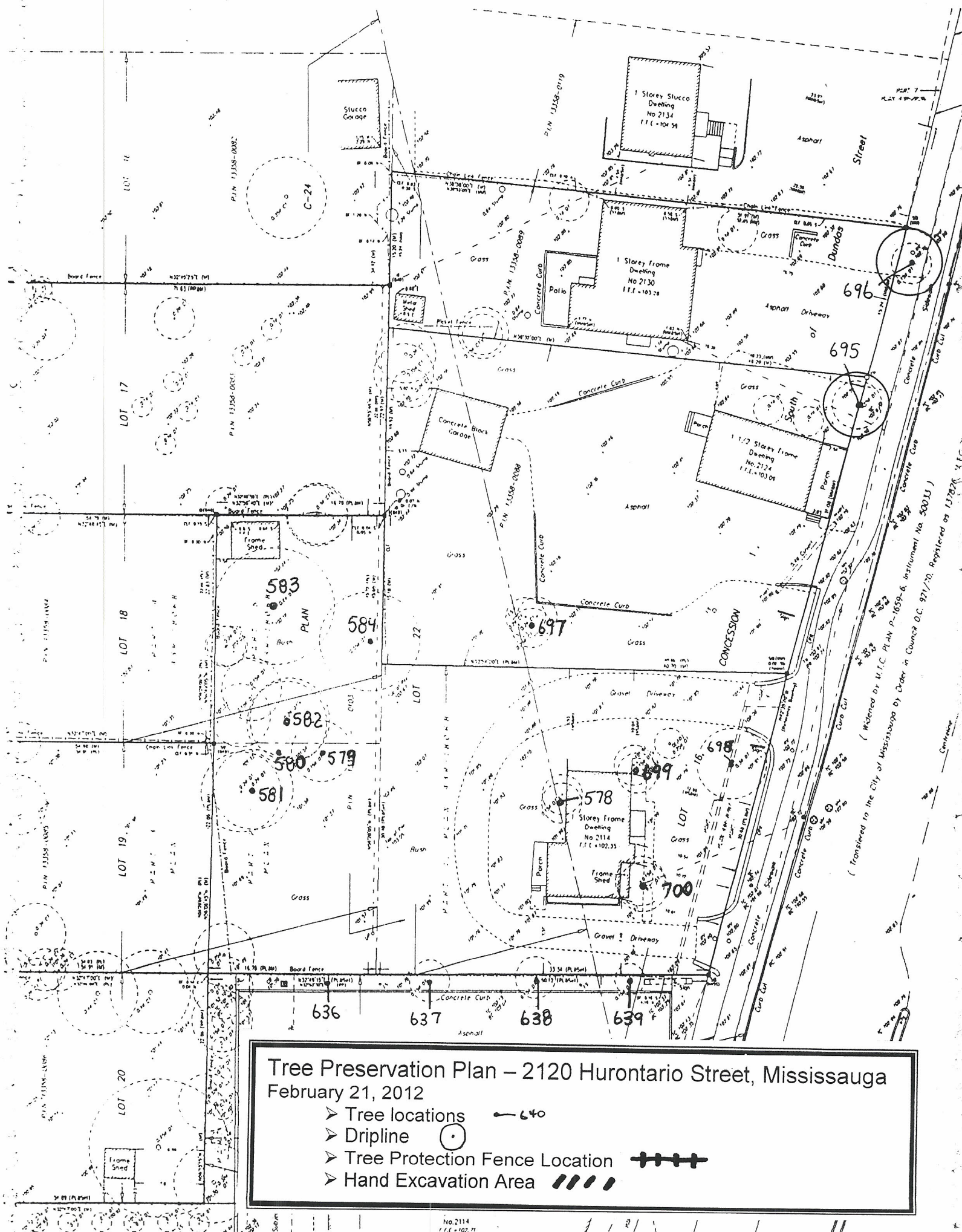
Please print name _____



I certify that:

□	DEMOTES	SURVEY MONUMENT SET
■	" "	SURVEY MONUMENT FOUND
N.S.E.W	" "	NORTH, SOUTH, EAST, WEST
M	" "	MEASURED
P.L.N	" "	PROPERTY IDENTIFIED NUMBER

Day	De Mott	De Mott	De Mott
1998	1	1	1
1999	1	1	1
2000	1	1	1
2001	1	1	1



Tree Preservation Plan – 2120 Hurontario Street, Mississauga February 21, 2012

- Tree locations
- Dripline
- Tree Protection Fence Location
- Hand Excavation Area

(Transferred to the City of Mississauga by Order in Council D.C. 971/70, Repealed as 137828)